

Controlling Mould Growth

CTMS

PCA

**COOLING TOWER
PARTS**

If you have a
Cooling Tower or
Evaporative
Condenser
Call CTMS on
1300 133 440 or

For NEW Cooling
Towers and relat-
ed equipment visit
Process Cooling
Australia

For all your
Cooling Tower
Spare Parts visit
Australia's only
Parts Warehouse

Visit our website
[http://
www.coolingtower
central.com.au](http://www.coolingtowercentral.com.au)

Follow us On

[Twitter](#)

[Facebook](#)

[LinkedIn](#)

SERVICES AVAILABLE

Programmed Maintenance

Services and Breakdowns

Industrial Products &

Services

Thermal Performance

Testing

Cooling Tower Cleaning

Mechanical Services

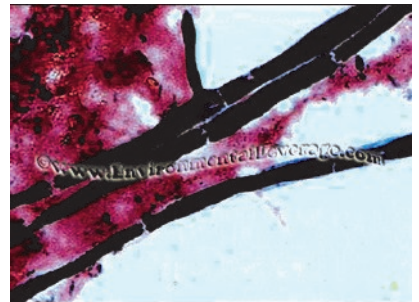
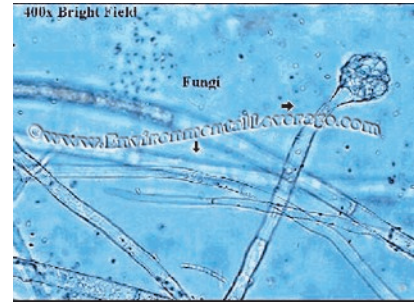
Cooling Towers are perfect environments for the growth of mould and other biological life.

Mould is a naturally occurring fungi and can be found anywhere, however, it begins to cause a problem when the seeds, or spores land and begin to multiply. Only a few basic conditions are required for mould growth—oxygen, moisture, and a source of food. Unlike most organic life, mould does not require sunlight to survive. Once mould begins to multiply, it digests whatever it lands on, causing serious damage.

In a cooling tower environment, this means corrosion, white rot and brown rot.

Generally speaking, treatment of mould is usually chemical based. Both 'direct chemical dosing' and 'acid dosing' are an effective method of reducing or even obliterating mould growth.

General maintenance can also reduce mould. Keep cooling towers as clean as possible and ensure pipes are flowing properly and unobstructed.



Different strains of mould

6/36 Blanck St, ORMEAU QLD 4208
P: (07) 5549 3800 F: (07) 5549 3888

Unit 1/4 Cumberland Ave, SOUTH NOWRA NSW 2541
P/F: 1(02) 4422 6890